

Comprehensive selection of transducers

Curved array transducers



C2-5

- Application : abdomen, obstetrics, gynecology, fetal heart, renal, general
- Field of view : 47.7°

C2-8

- Application : abdomen, obstetrics, gynecology, fetal heart, renal, general
- Field of view : 68.17°

C4-9ED

- Application : neonatal, pediatric, vascular, general
- Field of view : 150.42°

C2-4ES

- Application : abdomen, general
- Field of view : 120.336°

Linear array transducers



L3-8

- Application : small parts, breast, vascular, musculoskeletal, general
- Field of view : 38.71mm

L5-12EP

- Application : small parts, breast, vascular, musculoskeletal, general
- Field of view : 38.4mm

HL5-12ED

- Application : small parts, breast, vascular, musculoskeletal, general
- Field of view : 38.4mm

L5-12/50EP

- Application : small parts, breast, vascular, musculoskeletal, general
- Field of view : 49.92mm

LN5-12

- Application : small parts, breast, vascular, musculoskeletal, general
- Field of view : 38.1mm

Endocavity transducers



EV4-9/10ED

- Application : obstetrics, gynecology, urology, general
- Field of view : 148.092°

ER4-9/10ED

- Application : obstetrics, gynecology, urology, general
- Field of view : 148.092°

BCC4-9

- Application : urology, general
- Field of view : 166.6°

P2-4AH

- Application : cardiac, abdomen, pediatric, general, TCD
- Field of view : 90°

P3-7AC

- Application : cardiac, pediatric, general
- Field of view : 90°

Phased array transducers



CW transducers



CW2.0

- Application : cardiac, general

CW4.0

- Application : cardiac, pediatric, general



Scan code or visit
www.samsungmedison.com
to learn more

SAMSUNG MEDISON CO., LTD.

© 2014 Samsung Medison All Rights Reserved.
Samsung Medison reserves the right to modify the design, packaging, specifications, and features shown herein, without prior notice or obligation.

Samsung Ultrasound SONOACE X6

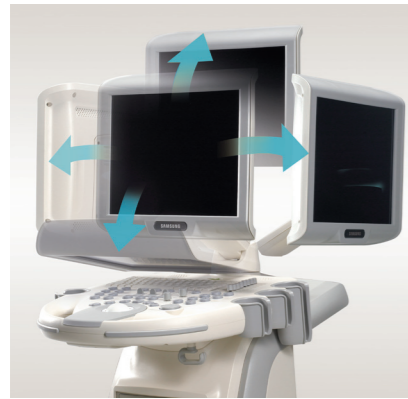
Compact design with exceptional value



SAMSUNG

Compact design with exceptional value

The SONOACE X6 is an impressive compact ultrasound system providing exceptional value and quality across a wide range of applications. The ergonomic design, the digital beam-forming processor, and its numerous advanced imaging functions will meet and exceed your requirements for any kind of diagnosis.



Powerful performance and a wide range of applications

The SONOACE X6 boasts sensitive spectral, color and power Doppler, enabling confident hemodynamic diagnosis of vascular anatomy and pathology. In addition to exceptional Doppler sensitivity, the SONOACE X6 incorporates an extensive list of image processing functions, including SRF™, FSI™ and Pulse Inversion Harmonic Imaging. The SONOACE X6 also offers a comprehensive selection of transducers, allowing for a wide range of applications including obstetrics and gynecology, abdomen, pediatric, musculoskeletal and cardiovascular.

- Full measurement package
- FSI™ (Full Spectrum Imaging)
- SRF™ (Speckle Reduction Filter)
- Harmonic Imaging / Pulse Inversion Harmonic Imaging
- Trapezoidal Imaging

Slim and compact design

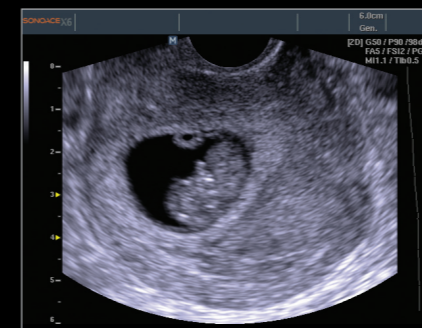
The SONOACE X6 has the functionality and features necessary for efficient and effective diagnosis, packed into a slim and compact design. It is light and mobile, enabling users to perform quick and precise diagnosis at any time and in any place. The 15-inch high resolution monitor combines with the articulating arm, excellent diagnostic features, and precise and easy operation to make the SONOACE X6 the outstanding ultrasound system.

- Tilt & swivel 15-inch monitor
- 3 transducer ports
- Front and rear handles
- 4 swivel wheel

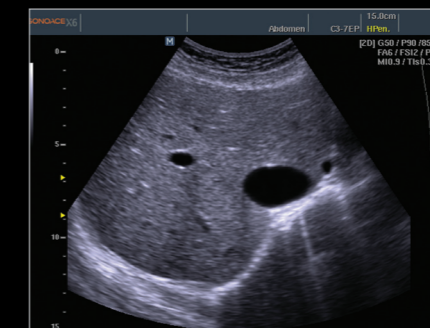
More efficient working environment

The SONOACE X6's software enables users to boot up the system quickly from its standby mode, and the system as a whole has an impressively fast response time. The shortcut and functional key groups, as well as the QuickScan™ technology, help to elaborate workflow efficiency and provide a quicker and more intuitive working environment.

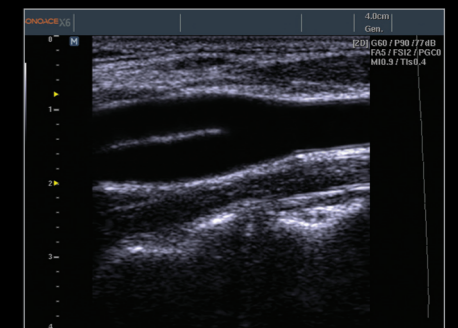
- Backlit 'Qwerty' keyboard
- Standby mode for rapid boot-up
- Thumbnail menu
- DICOM 3.0 compatible with SonoView™ package
- QuickScan™
- Customizable measurement and body markers



8 week fetus in 2D



Liver in 2D with SRF™



Bifurcation in CCA of 2D